

FROM ONE IMPRESSIVE
RANGE TO ANOTHER.

The Dunlop Grandtrek SUV tyre range offers excellent performance, superb all-round comfort and reliability both off-and-on-road. From freeway to free spirit, there's a tyre in the Dunlop Grandtrek SUV range for you.

HIGHWAY TERRAIN

ALL-TERRAIN

OFF-ROAD



**GRANDTREK
AT25**



**GRANDTREK
AT5**



**GRANDTREK
AT36**



**GRANDTREK
MT2**

GRANDTREK



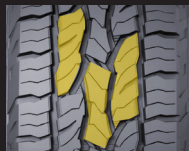
Welcome to the world of more

New Dunlop Grandtrek AT5 gives you more off-road capability, more mileage, more wet grip and more braking performance. It even comes in more sizes. Ask your dealer for the Grandtrek AT5 to fit your vehicle.

ADVANCED TREAD DESIGN

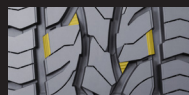
Long Connected Block

Adopting a "long connected block" design gives more even contact pressure distribution, which results in better direct grip for **improved handling stability in both straight line running and cornering.**



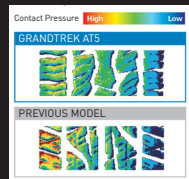
New Stone Ejector

A stone ejector sitting in the shoulder main groove reduces stone damage to help prolong the life of the tyre.



Larger Block

This feature achieves better even contact pressure which reduces uneven wear to significantly improve tyre life while increasing the actual contact area for **better wet grip performance.**

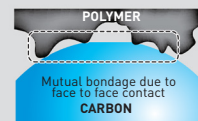


"SUPER ABRASION CARBON" COMPOUND

NEW FORMULA compound increases tread block rigidity which reduces wear, uneven wear and improves handling stability.

EXISTING COMPOUND

Heat, which makes the compound grip better, is created when detaching carbon from polymer.

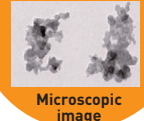


NEW AT5 COMPOUND

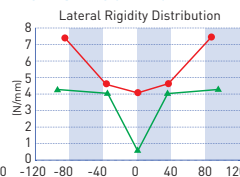
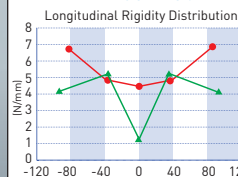
Super Abrasion Carbon's micro-structure gives more total contact area between carbon and polymer.



Increased contact area gives more heat and more grip.



NEW COMPOUND IMPROVES BLOCK RIGIDITY



The fine structure of super abrasion carbon increases the bonding point between carbon and polymer, enhances the reinforcement of rubber and increases the block rigidity of GRANDTREK AT5.



THE SUV/4X4 TYRE THAT GIVES YOU THE BEST OF BOTH WORLDS

50% MORE TYRE MILEAGE
25% MORE HANDLING STABILITY
10% MORE WET GRIP PERFORMANCE
8% MORE QUIET



DO MORE
GRANDTREK AT5